

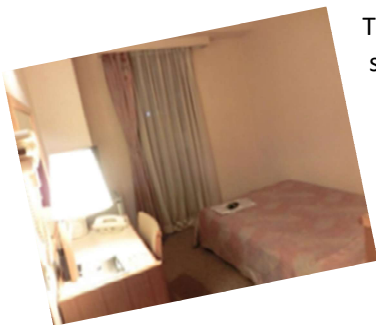
Postcards from Tokyo... where to stay:

I've been exploring around the city and had a good look at several of the hotels that are closest to the venue for World Cup. Realistically, any hotel that is close to a train line that can get you to Oikeibajo-Mae Station will be your best bet for quick and easy access to the venue. Some of the hotels I've seen include:

The Tmark City Hotel (2 stars), 1 Chome-2-10 Omorihoncho, Ota City, Tokyo 143-0011. Just a 25-minute walk from the Oi Stadium, compact rooms close to convenience stores. The hotel is right next to the OmoriKaigan Station, giving you easy access to anywhere in Tokyo.



Omori Park Hotel (1 star), 6 Chome-16-17 Minamioi, Shinagawa City, Tokyo 140-0013. 25-minutes' walk from Oi Stadium.



The hotel is close to several temples and historic sites as well as a large number of boutiques and restaurants. It is a short walk to the Omori train station, which will give you access along the Ueno-Tokyo rail line through Shinagawa City (where there are many restaurants and shopping outlets) and into Tokyo itself.



The Shinagawa Prince Hotel (3 stars) 4 Chome-10-30 Takanawa, Minato City, Tokyo 108-8611.



A little further from the stadium, but situated right in the heart of Shinagawa City, with access to all the restaurants and shopping outlets you could wish for.

An up-market hotel, it's a short walk to the Shinagawa station which is a major transport hub for the train lines around Tokyo.



There are a number of other options, depending on your budget and what you would like to do on your days away from hockey. As hotels are a very personal choice, it's hard to recommend one that suits particular requirements, so see the accommodation list provided by the organisers for a few more ideas.